



## SR24 SERIES DISHWASHERS

**HOBART**

### STANDARD FEATURES

- Low water consumption
- Fully automatic time cycle of 190 seconds (216 seconds for SR24C model)
- Hot water or chemical sanitation
- 70°F (21°C) rise booster heater on SR24H
- Pumped final rinse – rinse performance not affected by water line pressure
- Standard detergent pump
- 16 gauge (1.6 mm) stainless steel tank bottom with 18 gauge (1.3 mm) stainless steel sides, rear, top
- Stainless steel base
- 18 gauge (1.3 mm) stainless steel door
- No door gasket required
- Heavy duty door hinge
- Stainless steel lower front panel
- Fresh water rinse
- Cord and plug supplied on SR24 and SR24C
- Revolving upper and lower anti-clogging wash and rinse arms
- Two thermometers – one wash and one rinse
- Washes trays up to 18" x 26" (457 x 660)
- Removable stainless steel scrap screen
- Automatic fill with flow regulator on fill line
- Corrosion resistant pump
- Flexible fill hose (s/s wrapped) garden hose type connection supplied
- Flexible drain hose supplied
- Automatic pumped drain
- 16-5/8" (422) high door opening
- Cycle in process indication light(s)
- Overfill protection
- High temperature protection on SR24H
- Two standard commercial dish racks – one peg and one combination
- Available as free standing or undercounter models

### STANDARD VOLTAGES

- 120/60/1 SR24 and SR24C
- 120/208-240(3W)/60/1 SR24H

### ACCESSORIES AT EXTRA COST

- Rinse aid pump
- Stainless steel top and side panels
- Stainless steel base with 6" (152) legs
- 17" (432) stainless steel stand
- Pressure regulator valve

Metric measurements are in brackets.

Specifications, Details and Dimensions on Inside and Back.



#### SR24H MODEL

Built in Booster 180°F (82°C) Rinse  
(Shown with optional side and top panels)

SR24H is ideal for locations with a low incoming water temperature. SR24H has a hold for heat function and will not allow the dishwasher to go to the rinse cycle unless the rinse temperature is at the thermostat setting, i.e. 180°F (82°C).

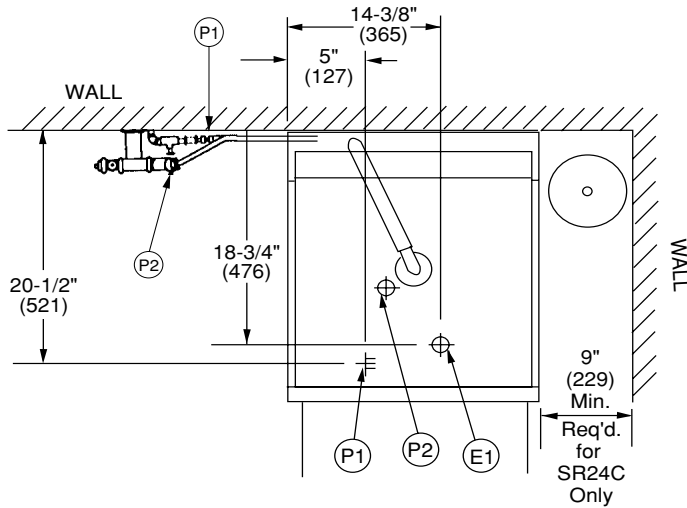
**SR24 SERIES DISHWASHERS**

Hobart Food Equipment Group Canada

# SR24 SERIES DISHWASHERS

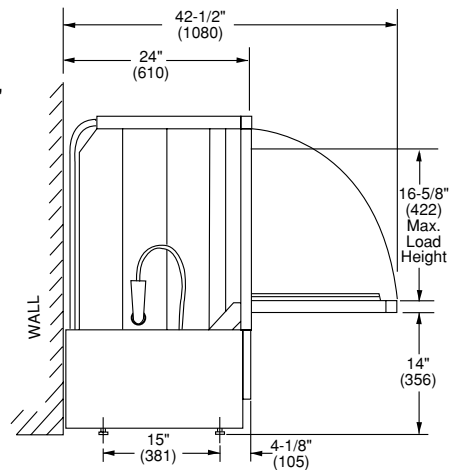
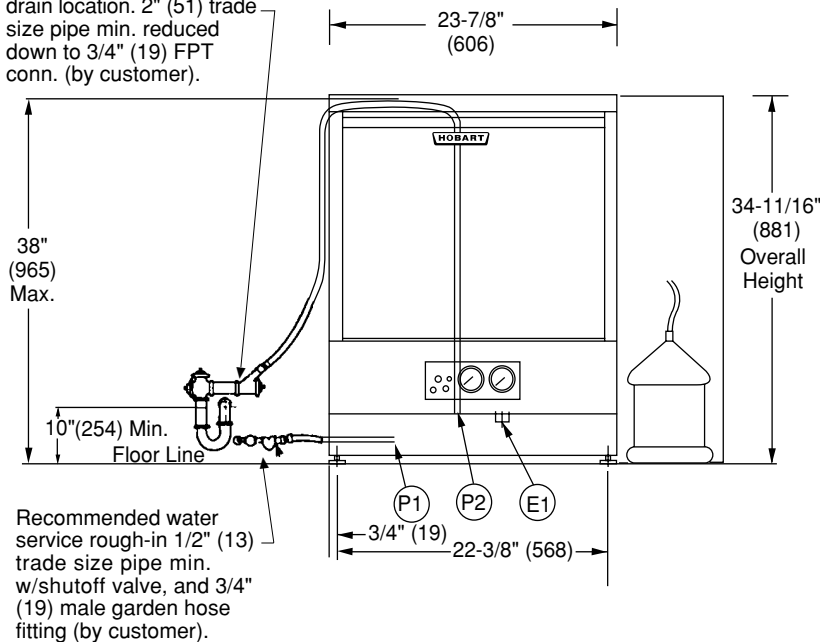


## DETAILS & DIMENSIONS INCHES MM



LEGEND	
P1	Single fill and rinse pipe connection, 3/4" (19) female garden hose fitting on 6' (1829) long hose supplied with machine. Supply water temperature must be a minimum 120°F (49°C) for SR24C and SR24H models and a minimum 180°F (82°C) for the SR24 model.
P2	Drain pipe connection. 3/4" (19) MPT fitting with 10' (3048) hose supplied with machine.
E1	Location of electrical connection — <b>SR24H</b> only. 3/4" (19) elec. connector (1-1/8" [29] dia. hole), 4" (102) above finished floor.

Recommended rough-in drain location. 2" (51) trade size pipe min. reduced down to 3/4" (19) FPT conn. (by customer).



### INTERIOR DIMENSIONS

1. Max. inside height from inside rack to top wash arm 16-5/8" (422).
2. Width 22-3/16" (564).
3. Front to rear with door closed 21-1/2" (546).

### WARNING

Certain materials including silver plate, aluminium & pewter are attacked by sodium hypochlorite (liquid bleach). See instruction manual page.

### DISHWASHER WEIGHTS

Model	Shipping Weight Lbs. (kg)	Net Weight Lbs. (kg)
SR24	147 (67)	127 (58)
SR24C	155 (70)	135 (61)
SR24H	166 (75)	146 (66)

### WARNING

Electrical and grounding connections must comply with the applicable portions of the National electrical code and/or other local electrical codes. Plumbing connections must comply with applicable sanitary, safety and plumbing codes.

### WARNING

Use only 5.2% or 8.4% sodium hypochlorite (liquid bleach) as sanitizing chemical to ensure proper operation of dish machine. Do not premix wetting agent and sodium hypochlorite (liquid bleach).

### WARNING

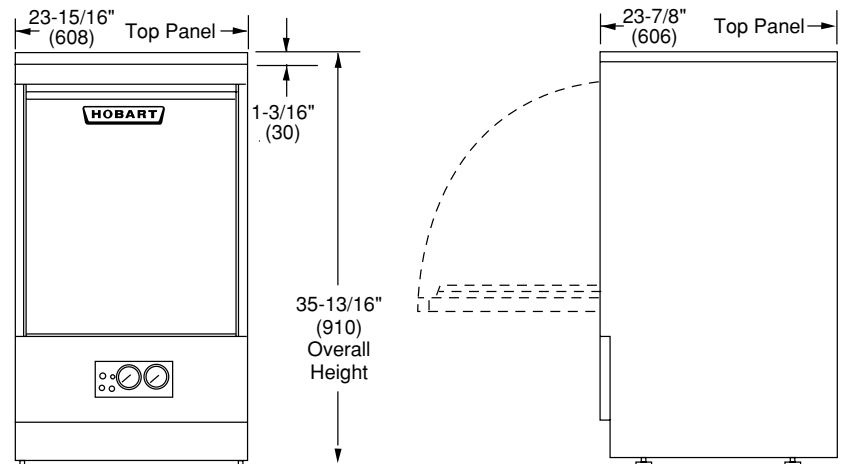
Not recommended for installation within wooden, plywood or other similar, non-moisture resistant framework.

## DETAILS & DIMENSIONS INCHES MM

MODEL	RATED AMPS	MIN. SUPPLY CIRCUIT CONDUCTOR AMPACITY	MAX. TIME DELAY FUSE	SPECIFICATIONS
SR24	8.4	15	15	120/60/1
SR24C	9.0	15	15	120/60/1
SR24H	37.6	50	50	120/208-240/60/1

**NOTE:** SR24H requires three wire connection with ground.

### SR24 Top Panel Machine



## INSTALLATION INSTRUCTIONS

1. A single fill and rinse pipe connection is required. 6' (1829) flex hose supplied.
2. The electrical connection location for a 3/4" (19) electrical connector (1-1/8" [29] diameter hole) is provided for the SR24H model only.
3. The required electrical cord and plug are supplied on the SR24 and SR24C models only.
4. **Important:** The sodium hypochlorite container should be placed on the floor (SR24C model only).
5. If the sodium hypochlorite container is to be placed in a cabinet adjacent to the machine, a 1/2" (13) diameter hole is required in the cabinet to run the bleach supply line through.
6. Pumped drain 3/4" (19) MPT fitting 10' (3048) hose supplied.
7. A supply line strainer is supplied.
8. A flow regulator is supplied. If water flowing pressure is under 25 psi (172 kPa), remove the regulator. If water flowing pressure is over 30 psi (207 kPa), install a PRV (not supplied).

# SR24 SERIES DISHWASHERS



## SPECIFICATIONS

Listed by the Underwriters Laboratories Inc. and NSF International.

**DESIGN:** Front opening, equipped with stainless steel front.

**Freestanding Models** – Top and side panels are optional.

**Undercounter Models** – Not equipped with side or top panels. Adjustable feet lower overall height to 34" (864) minimum and raise it to 35-1/2" (902) maximum.

**CONSTRUCTION:** 16 gauge (1.6 mm) stainless steel tank bottom with 18 gauge (1.3 mm) stainless steel sides, rear, top and door.

**PUMP:** Centrifugal-type, integral with motor, vertically mounted. Pump capacity is 45 US gallons (170 L) per minute.

**MOTOR:** Built to Hobart specifications, 1/2 HP (0.37 kW), single phase, split-phase type, furnished for 120/60/1 or 120/208-240(3W)/60/1 electrical specification. Factory sealed lubrication.

**RACKING:** Will accommodate most racks from 10" x 20" (254 x 508) (half racks) to 20" x 20" (508 x 508). Will also accept 16" x 18" (406 x 457) cafeteria trays and 18" x 26" (457 x 660) bun pans.

**WASH AND RINSE CYCLE:** Completely automatic, controlled by an electrically energized synchronous timer. Closing the door actuates the operating cycle. When the amber cycle light(s) goes out, the operating cycle is complete. The cycle may be interrupted at any time by opening the door. Cycle continues when the door is closed.

**WASH:** Revolving upper and lower hydrosweep wash arms with unrestricted openings provide thorough distribution of water and are easily removed for cleaning. Uses a single water fill connection.

### RINSE AND SANITATION:

**SR24 Model** – Accomplished by filling the sump with hot, fresh water and pumping it through revolving wash arms.

**SR24H Model** – Accomplished by means of a built-in 7 kW electric booster (with stainless steel tank) designed to raise the water temperature. Hold for heat function will not allow machine to go into rinse cycle unless booster temperature is at the thermostat setting of a minimum 180°F (82°C).

**SR24C Model** – Low temperature/chemical sanitizing: Accomplished by filling the sump with 120°F (49°C)\* fresh water and pumping it through revolving wash arms. The required amount of 5.25% sodium hypochlorite (liquid bleach) is dispensed into the final rinse water from a 1 US gallon (3.8 L) container to achieve a minimum 50 PPM sanitizing solution. Injection of the sodium hypochlorite is accurately accomplished by a Hobart sanitizing chemical pump. Sight tube and ball float indicator visually signify when the sanitizer solution is empty. The customer must supply sanitizer solution and container.

**\*NOTE:** NSF minimum 120°F (49°C).

MACHINE RATINGS		SR24	SR24H	SR24C
Cycle time (140° F [60°C] incoming water temperature)		190 seconds	190 seconds	216 seconds
Dishes per hour (average 25 per rack)		350	350	350
Glasses per hour (average of 45 per rack)		630	630	630
Overall Dimensions (Width x Depth x Height) – inches (mm)		24 x 24 x 34-1/2 (610 x 610 x 876)	24 x 24 x 34-1/2 (610 x 610 x 876)	24 x 24 x 34-1/2 (610 x 610 x 876)
Wash Motor – H.P. (kW)		1/2 (0.37)	1/2 (0.37)	1/2 (0.37)
Tank Capacity – U.S. gallons (L)		1.8 (6.8)	1.8 (6.8)	1.8 (6.8)
Pump Capacity –U.S. gallons per minute (L per minute) – Weir Test		45 (170)	45 (170)	45 (170)
7 kW Electric Booster Heater		N/A	Standard	N/A
Sanitizing Chemical Pump with Sight Tube and Ball Float Indicator		N/A	N/A	Standard
Hot Water Consumption at 20 psi (138 kPa)	Wash Cycle - U.S. gallons (L) per rack	1.4 (5.3)	1.4 (5.3)	1.2 (4.5)
	Rinse Cycle U.S. gallons (L) per rack	1.4 (5.3)	1.4 (5.3)	1.2 (4.5)
	U.S. gallons (L) per hour	38 (144)	38 (144)	34 (129)
Hot Water Consumption at 25 psi (172 kPa)	Wash Cycle - U.S. gallons (L) per rack	1.7 (6.4)	1.7 (6.4)	1.3 (4.9)
	Rinse Cycle U.S. gallons (L) per rack	1.7 (6.4)	1.7 (6.4)	1.3 (4.9)
	U.S. gallons (L) per hour	46 (174)	46 (174)	36 (136)
Minimum Flow Rate, U.S. gallons (L) per minute		4.5 (17)	4.5 (17)	4.5 (17)
Peak Rate of Drain Flow – U.S. gallons (L) per minute (Initial Rate with Full Tank)		10 (37.9)	10 (37.9)	10 (37.9)
Minimum Water Temperature – Wash Cycle – °F (°C)		150 (66)	150 (66)	120 (49)
		180 (82)	180 (82)	120 (49)
– Rinse Cycle – °F (°C)				
Shipping Weight Crated – Approx. lbs. (kg)		147 (66.7)	166 (75.3)	155 (70.3)
Minimum Hot Water Supply Temperature - °F (°C)		180 (82)	120 (49)	120 (49)
Detergent Pump		Standard	Standard	Standard
Rinse Aid Pump		Optional	Optional	Optional

As continued product improvement is a policy of Hobart, specifications are subject to change without notice.

Hobart Food Equipment Group Canada